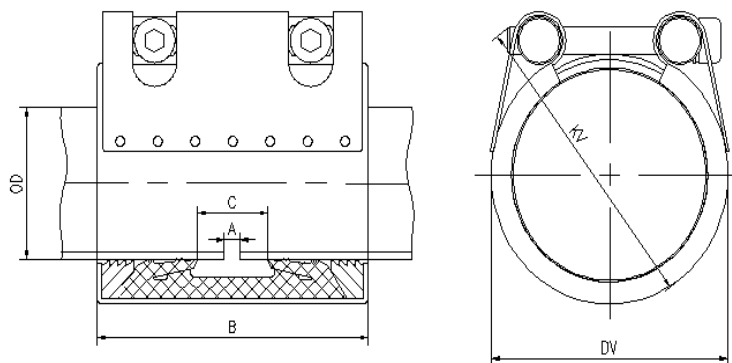




BEIJING GRIP PIPE TECH CO., LTD.



GRIP-GT (PLAST-GRIP)										
Pipe outside diameter		Clamping range	Working pressure		Width	Distance between sealing	Setting gap between pipe ends		Torque rate	Bolt
O.D.		Min-Max			B	C	A without strip insert	with strip insert		
(mm)	(In.)	(mm)	(bar)	(bar)	(mm)	(mm)	(mm)	(mm)	(Nm)	M
32	1.260	31-33	16	25	61	26	0~5	5	10	M6X2
40	1.575	39-41	16	25	61	26	0~5	5	15	M8×2
50	1.969	49-51	16	25	61	26	0~5	10	15	
63	2.480	62-64	16	25	76	37	0~5	10	20	
75	2.953	74-76	16	25	95	41	0~5	10	25	M8×2
90	3.543	89-91	16	25	95	41	0~5	10	25	
110	4.331	109-111.5	16	25	95	41	5~10	15	25	
125	4.921	124-126.5	16	25	110	54	5~10	15	60	M10X2
140	5.512	139-142	16	25	110	54	5~10	15	60	
160	6.299	159-162	16	25	110	54	5~10	25	90	
180	7.087	179-182	10	16	142	80	5~10	25	90	M12×2
200	7.874	199-202	10	16	142	80	5~10	25	90	